

# PRODUCT SPECIFICATION SHEET

## 1600mm 700 Series Gas Range with Gas Oven



### 7PCFG1606



#### Dimension:

W1600 x D700 x H900mm

#### Finish:

Stainless Steel

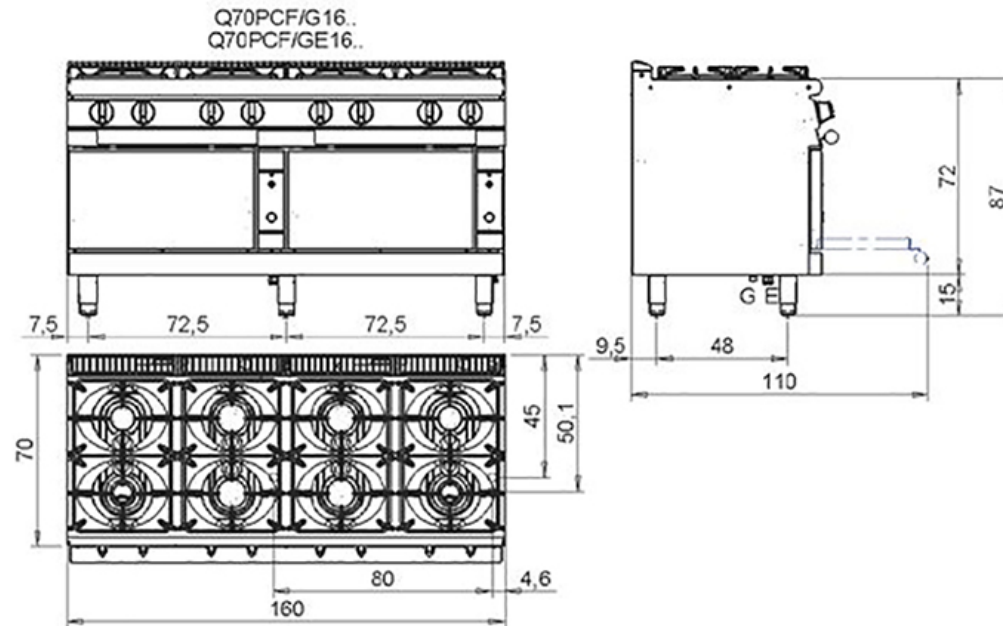
#### Features:

- Eight burner gas range with two gas ovens
- Flame failure device for burners
- Knobs with IPX5 water jet ingress protection rating
- AISI304 stainless steel construction
- Total gas load - 220 Mj

NOTE: Images, specifications and dimension correct at the time of publishing. It is advised that these details be confirmed prior to construction as no liability will be taken by Harvey Norman Commercial for any changes in specifications.

# PRODUCT SPECIFICATION SHEET

## 1600mm 700 Series Gas Range with Gas Oven



NOTE: Images, specifications and dimension correct at the time of publishing. It is advised that these details be confirmed prior to construction as no liability will be taken by Harvey Norman Commercial for any changes in specifications.